

C.M. Stripling Irrigation Research Park

Monthly Newsletter

December 2021



A view of the park...



In This Issue

- ▶ From the Superintendent
- ▶ Drought Conditions
- ▶ Water Resources
- ▶ Past & Upcoming Events
- ▶ In The News
- ▶ At the Park
- ▶ Christmas Trivia
- ▶ Fun Christmas Puns
- ▶ SIRP Weather
- ▶ Contact Information



College of Agricultural &
Environmental Sciences
UNIVERSITY OF GEORGIA

From the Superintendent

Calvin Perry

I trust your Thanksgiving holiday was a happy and meaningful time. Mine certainly was. (and yes I enjoyed the good food WAY too much!)

November at Stripling Park turned out to be a VERY dry month with only 0.07 inches recorded by our official UGA weather station. Our long term average is 3.0 inches over 6 rainy days. Our high temps ranged from 82.7F to 53.4F and our lows ranged from 57.8F to a cold 28.8F. The long term average high temp is 72.1F and low is 45.5F. According to Pam Knox, director of the UGA Weather Network, this November's SIRP rainfall amount was the driest since our records began in 1997!

I guess if you've got to have a dry month, November would be the one. We finished harvesting cotton research plots as we took care of plots for Brian Hayes and Dr. Henry Sintim. We harvested non-data rows in Dr. George Vellidis' soybean study just ahead of SWVT harvesting his plot data rows with one of their Wintersteiger 2-row plot combines. With crops out of the way, we got soil samples pulled from all of our field

areas. We also pulled nematode soil samples for our county agent, Brian Hayes, to submit to a regional soybean nematode project. Kyle steadily sowed rye cover crop seed and finished the day before Thanksgiving. With the dry conditions, we had to irrigate all the rye for good germination!

Visitors to the Park in November included Dr. Sintim's crew, Dr. Kemerait's crew, Dusty and Bob with SWVT, grad student Emily Bedwell, Brian Hayes (Mitchell Co. ANR agent) and Caleb Traugh, Early Co. farmer.

We hosted Ashley Perl's 32 sixth graders in her Ag/STEM class from Lee Co. (GA) Middle School East. It was fun for the SIRP staff to spend a few hours with them and their eager minds ready to learn about agriculture, plants, irrigation, sensors, etc. Ashley is a Agriculture teacher and FFA advisor at the school.

We were pleased to again host the monthly meeting of the Flint River Soil & Water Conservation District.

Speaking of meetings, I attended the November

meeting of the Lower Flint – Ochlocknee Regional Water Council in Albany. I was recently reappointed to the council by Governor Kemp.

I enjoyed serving as a judge for the Irrigation Association's New Product Contest in the Agriculture category. Four of us listened to short product introductions from a number of companies with very innovative products and services. The winner is being announced this week at the IA's annual meeting in San Diego.

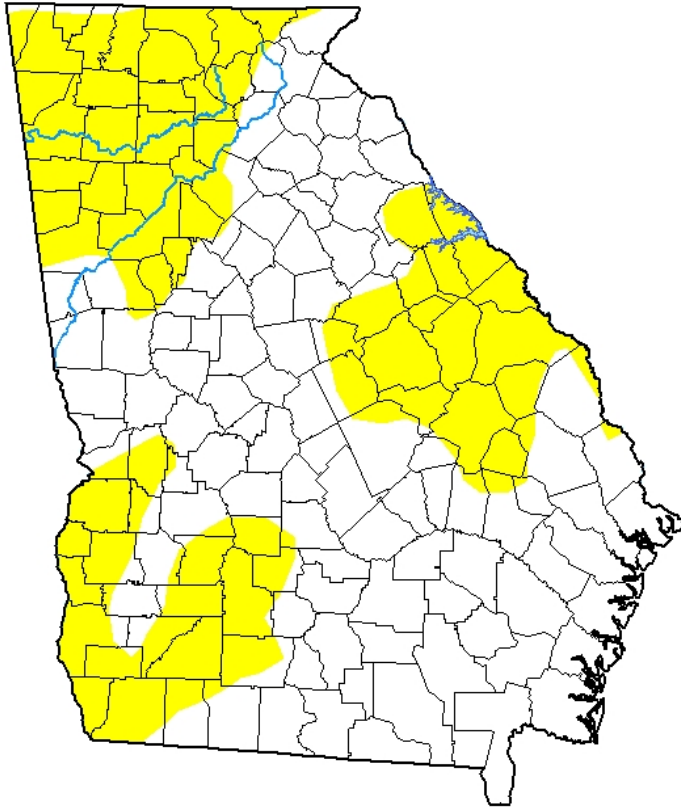
In closing, I would like to wish everyone a Merry Christmas and Happy New Year. SIRP will be officially closed December 25th to January 3rd so we can enjoy the time with our families and friends. We look forward to working with many of you in 2022.



Drought Conditions

U.S. Drought Monitor Georgia

November 30, 2021
(Released Thursday, Dec. 2, 2021)
Valid 7 a.m. EST



Drought Conditions (Percent Area)

	None	D0-D4	D1-D4	D2-D4	D3-D4	D4
Current	61.09	38.91	0.00	0.00	0.00	0.00
Last Week <i>11-23-2021</i>	80.12	19.88	0.00	0.00	0.00	0.00
3 Months Ago <i>08-31-2021</i>	100.00	0.00	0.00	0.00	0.00	0.00
Start of Calendar Year <i>12-29-2020</i>	65.78	34.22	0.00	0.00	0.00	0.00
Start of Water Year <i>09-28-2021</i>	100.00	0.00	0.00	0.00	0.00	0.00
One Year Ago <i>12-01-2020</i>	62.51	37.49	0.00	0.00	0.00	0.00

Intensity:

- None
- D0 Abnormally Dry
- D1 Moderate Drought
- D2 Severe Drought
- D3 Extreme Drought
- D4 Exceptional Drought

The Drought Monitor focuses on broad-scale conditions. Local conditions may vary. For more information on the Drought Monitor, go to <https://droughtmonitor.unl.edu/About.aspx>

Author:

Richard Heim
NCEI/NOAA



droughtmonitor.unl.edu

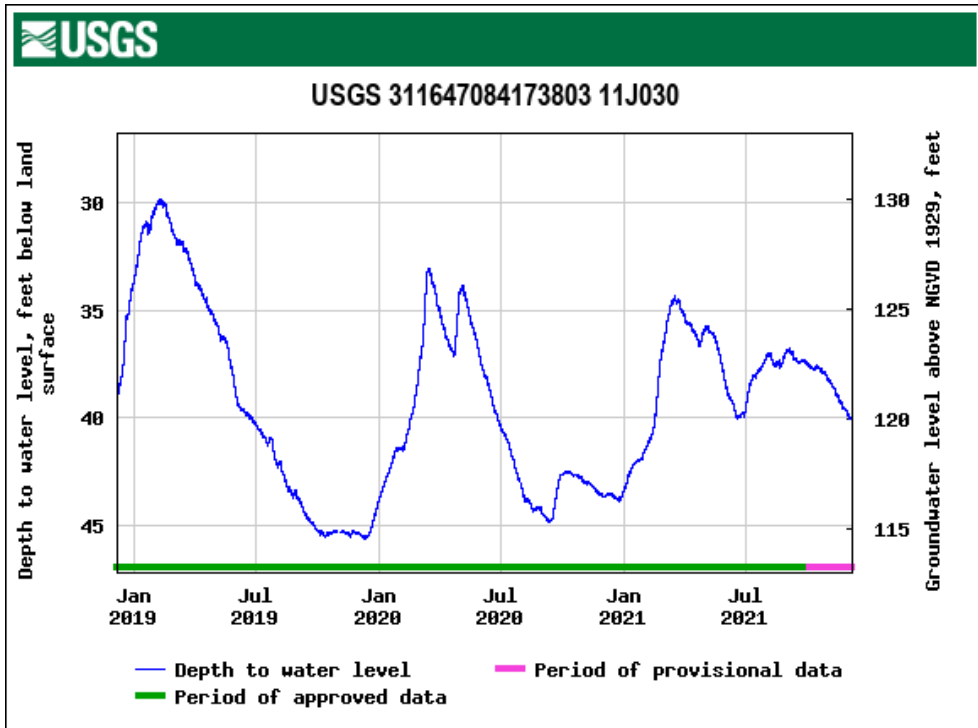
Drought Monitor map for the state of Georgia as of November 30. Currently, Georgia has 38.91% of its area in “Abnormally Dry” conditions. As you can see, the dry conditions are in north central, northeast, east central and southwest sections of the state. Stripling Park is in the center of a dry region.

For more info:

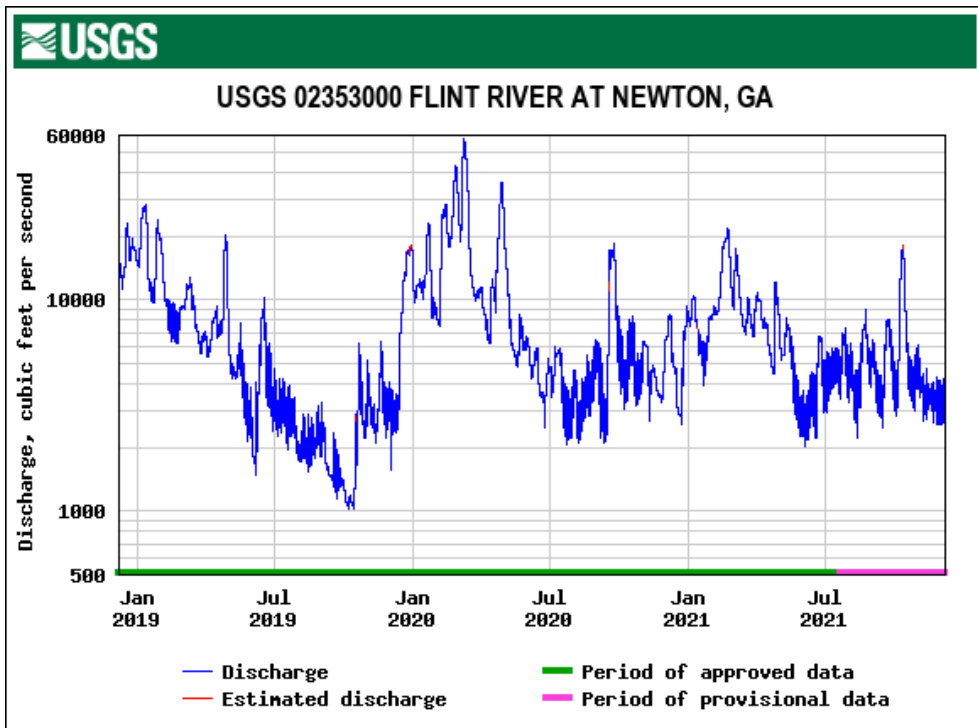
<https://droughtmonitor.unl.edu/CurrentMap/StateDroughtMonitor.aspx?GA>



Water Resources



Above - USGS data for the past 3 years for a groundwater monitoring well here at SIRP in Floridan aquifer. Below - stream gage on the Flint River at Newton for past 3 years.



Events

Past events

November 4	Lee Co. FFA / STEM class visit
November 9	FRSWCD meeting
November 30	Production Mtg. (Mitchell Co. Ag Canter)
December 1	Agrilytica meeting

Upcoming events

December 14	FRSWCD meeting
December 25-31	Christmas Holidays
January 1, 2022	New Years Holiday
January 3	New Years Holiday (observed)
January 12	Avery Ins. Meeting



In The News

[Georgia Pecan Prices: A Few Large Lots Come to Market](#)

[Refining the robotic cotton harvester to do more](#)

[USDA Introduces "Micro Farm" - a New Insurance Policy for Farmers Who Sell Locally](#)

[Georgia State Conservationist Promotes EQIP](#)

[UGA plant pathologist recognized for improving the world, one peanut at a time](#)

[Adaptive Swarm Robotics Could Revolutionize Smart Agriculture](#)

[AFBF applauds infrastructure bill, criticizes Build Back Better](#)

[High Fertilizer Costs Likely to Extend Into Spring Planting](#)

[Proposed Water Rule a Return to Overreaching Regulations](#)

Videos:

[Peterson Bros. - Farmin' Like \('Fancy Like' Parody\)](#)



At the Park

Right: B.J. & Kyle taking soil samples.

Below: Ultra late soybeans ready to harvest.



At the Park



Above: SWVT harvesting ultra late soybeans.

Below: Dr. Glen Harris' class visits SIRP.



At the Park

Right & Below:
Sowing &
irrigating rye
cover crop,



At the Park



Above: SIRP's Christmas luncheon.



Christmas Trivia

Which country started the tradition of putting up a Christmas tree?

Germany

How many gifts in total were given in “The Twelve Days of Christmas” song?

364

What Christmas beverage is also known as “milk punch”? From what country?

Eggnog / Britain

What was the first company that used Santa Claus in advertising?

Coca-Cola

Per a recent holiday fad, what “spy” hides around the house, reporting back to Santa on who has been naughty and nice? The Elf on the Shelf

What two other colors besides green and red are commonly associated with Christmas? Gold and silver

The movie Miracle on 34th Street is based on a real-life department store. What is it? Macy’s

One of Santa’s reindeer shares a name with a famous symbol of Valentine’s Day. Which reindeer is that? Cupid

In what state resides the town of “Santa Claus”?

Georgia

How do you shorten the word ‘Christmas’?

Xmas. Origins from the mid-1500s and the Greek letter X, which is the first letter in the Greek word for Christ: Χριστός.

Which U.S. state was the first to declare Christmas an official holiday? What state was the last? Alabama (first), Oklahoma (last)

What do kids in Sweden leave for Santa?

Coffee

What are the two other most popular names for Santa Claus?

Kris Kringle and Saint Nick

What does the word Noel mean in Latin?

Birth



Fun Christmas Puns...

The elves love your type of Christmas music but their favorite is Wrap!

Look out for Santa's dog when he comes, he's called Santa-Paws!

The elves are happy not to be in school at Christmas time learning the elf-abet.

The difference between the ordinary alphabet and the Christmas alphabet is that the Christmas alphabet has no-el.

When Santa walks backward, he goes 'Oh, Oh, Oh'!

If Santa gives you a ride in his sleigh, hold on for deer life!

What's red then white then red then white then red then white? It's Santa rolling off your roof.

Don't mind the resting Grinch face.

Watch where you light the Christmas candles this year—you don't want Santa to become Krisp Kringle.

Christmas is a special time of year, as Santa graces you with his presents.

No need to claus a scene! Fir real.

Don't forget to snap that Christmas elfie.

There's snow place like home for the holidays.

We're having snow much fun.

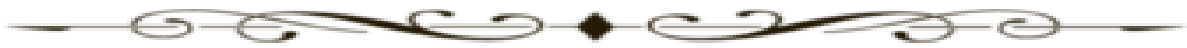
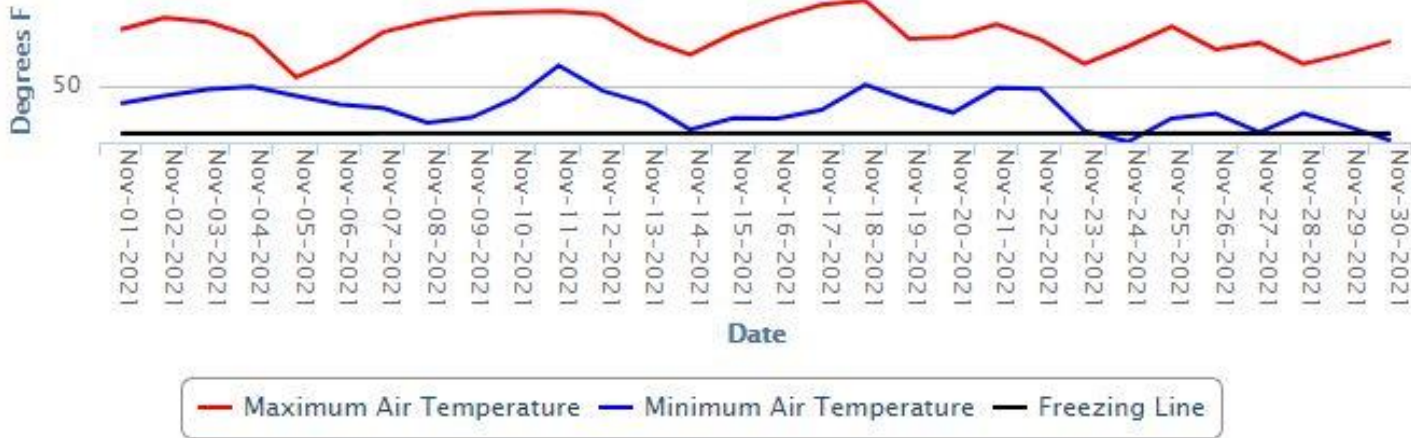
Think we can branch out this holiday season?

Have a beyuletiful Christmas!

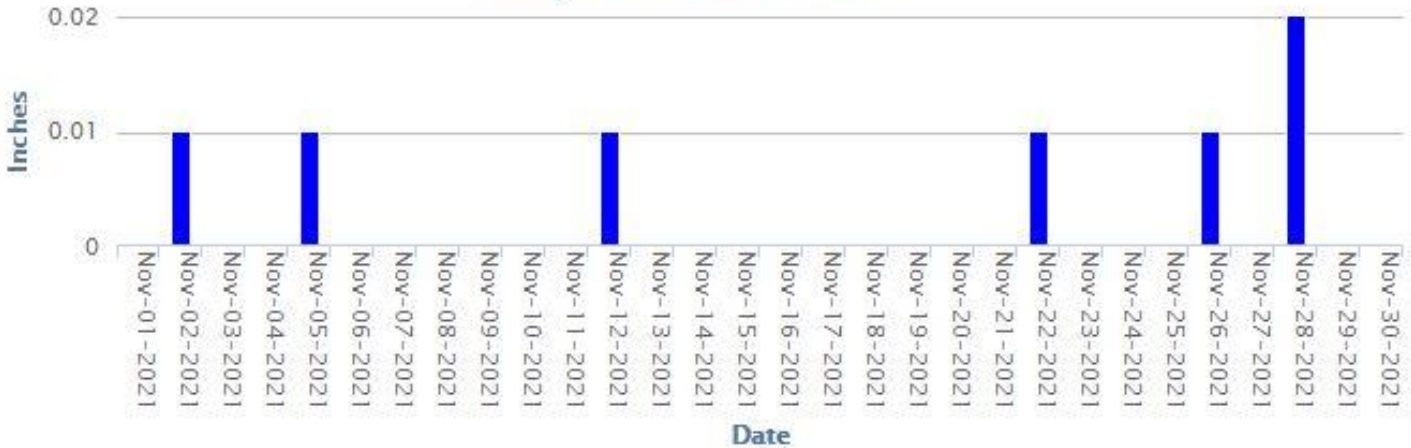


SIRP Weather

Maximum Temperature, Minimum Temperature



Daily Cumulative Rainfall



For November, SIRP had 0.07 inches of rainfall, compared to 3.85 inches in October, 2.69 inches in September, and 6.54 inches in August. From Jan. 1 to Nov. 30, we've received 52.51 inches of rain, so far.

To explore weather information, visit www.georgiaweather.net.



Contact Information



C.M. Stripling Irrigation Research Park

College of Agricultural & Environmental Sciences

UNIVERSITY OF GEORGIA

8207 Highway 37 West
Camilla, GA 31730
(229) 522-3623

striplingpark.caes.uga.edu

Calvin Perry (Superintendent): perrycd@uga.edu
Candace Gray (Admin. Associate): sirp@uga.edu

Trivia:

What goes up and down, but still remains in
the same place?

Answer: Stairs

Commit to Groundbreaking Research

Ag research keeps Georgia agriculture on the leading edge of the industry. Consider giving to the C.M. Stripling Irrigation Research Park today.

[Click here to Donate Now.](#)



College of Agricultural &
Environmental Sciences
UNIVERSITY OF GEORGIA