

C.M. Stripling Irrigation Research Park

Monthly Newsletter

March 2022



An unexpected guest at SIRP's front door...
a water snake. They are officially out & about!



In This Issue

- ▶ From the Superintendent
- ▶ Drought Conditions
- ▶ Water Resources
- ▶ Past & Upcoming Events
- ▶ In The News
- ▶ At the Park
- ▶ Trivia
- ▶ Fun Puns
- ▶ SIRP Weather
- ▶ Contact Information



College of Agricultural &
Environmental Sciences
UNIVERSITY OF GEORGIA

From the Superintendent

Calvin Perry

Hello from a quite dry Stripling Park. February saw only 1.79 inches of rain here over 6 rain days. Note the drought monitor map on the next page. Our high temps ranged from 82 to 52F and lows ranged from 59 down to a chilly 27F. Our long-term average for February includes 4.63 inches of rain over 8 rain days with a high of 65.3F and a low of 41.2F.

The staff at the Park has been busy testing VRI zones on two of our linear-move irrigation systems, servicing engines on our linear-move systems, flushing water lines supplying SDI irrigation zones, applying herbicide to terminate cover crop in corn research areas, attending Extension production meetings, attending a (virtual) WPS safety class (thanks Tifton Campus!), and assisting Vantage SE as they installed a Trimble GFX-750 based GPS guidance system in our new JD 6145R tractor. We've also been waiting patiently for parts for our JD Gator ATV, JD 6330 tractor, JD backhoe, etc.

Our forester did a controlled burn in a timber section that was clear cut recently. Afterwards, we had improved Slash pine seedlings planted two weeks ago.

Visitors to the Park included Stephanie Hollifield (SW District Extension), Taylor McDaniel (Randolph/Clay Extension ANR

agent), Dr. Bob Kemerait, Dr. Bob Stougaard, Brian Hayes (Mitchell Co Extension), the Flint River Soil & Water Conservation District (monthly meeting), Chaz Holt (Quail Forever), Dallas Ingram (GA DNR), and Dr. Andre da Silva (Auburn Horticulture). Avery Crop Insurance (Bainbridge) used our conference room for a customer appreciation luncheon.

I was pleased to participate in a University of Florida-led focus group meeting (at SIRP) to discuss their survey to gage 'willingness to accept' incentive programs to help producers adjust their nutrient and irrigation practices. The UF team included Dr. Christa Court, Fei He (PhD student), and Kelsey McDaid (Research Coordinator). Local farmers David Holton and Sammie Perkins also participated. Grady County Extension Agent (and former SIRP employee) Cale Cloud was the meeting facilitator.

We will be working with Dallas and Chaz to create four wildlife habitat areas as part of the Bobwhite Quail Initiative. More info as this project develops.

As a member of the search committee for the UGA/CAES Attapulgus Research & Education Center new superintendent, I participated in the interview for our top candidate for the position. We

hope to have more news on this soon.

As planting season is rapidly approaching, now is a great time to spend a few hours getting your irrigation systems ready for the new crop year. UGA Extension has a publication that can guide your through this – "Spring Center Pivot and Lateral Irrigation System Preparation." Find it online at:

https://secure.caes.uga.edu/extension/publications/files/pdf/B%201452_3.PDF

Also, Farm Progress has a nice article dealing with this – "Checklist aims to keep irrigation systems running." You can find it online at:

<https://www.farmprogress.com/irrigation-systems/checklist-aims-keep-irrigation-systems-running>

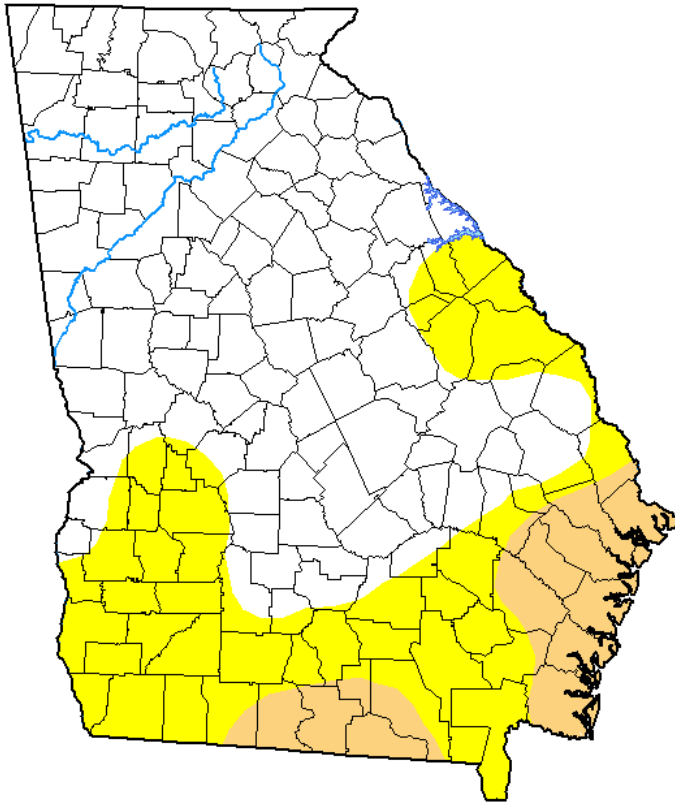
Finally, I'm proud to note that as of March 1, I have been employed with UGA/CAES for 33 years! Wow, time really does fly.



Drought Conditions

U.S. Drought Monitor Georgia

March 1, 2022
(Released Thursday, Mar. 3, 2022)
Valid 7 a.m. EST



Drought Conditions (Percent Area)

	None	D0-D4	D1-D4	D2-D4	D3-D4	D4
Current	60.65	39.35	10.52	0.00	0.00	0.00
Last Week <small>02-22-2022</small>	68.74	31.26	3.97	0.00	0.00	0.00
3 Months Ago <small>11-30-2021</small>	61.09	38.91	0.00	0.00	0.00	0.00
Start of Calendar Year <small>01-04-2022</small>	97.01	2.99	0.00	0.00	0.00	0.00
Start of Water Year <small>09-28-2021</small>	100.00	0.00	0.00	0.00	0.00	0.00
One Year Ago <small>03-02-2021</small>	99.43	0.57	0.00	0.00	0.00	0.00

Intensity:

- None
- D0 Abnormally Dry
- D1 Moderate Drought
- D2 Severe Drought
- D3 Extreme Drought
- D4 Exceptional Drought

The Drought Monitor focuses on broad-scale conditions. Local conditions may vary. For more information on the Drought Monitor, go to <https://droughtmonitor.unl.edu/About.aspx>

Author:

Brad Rippey
U.S. Department of Agriculture



droughtmonitor.unl.edu

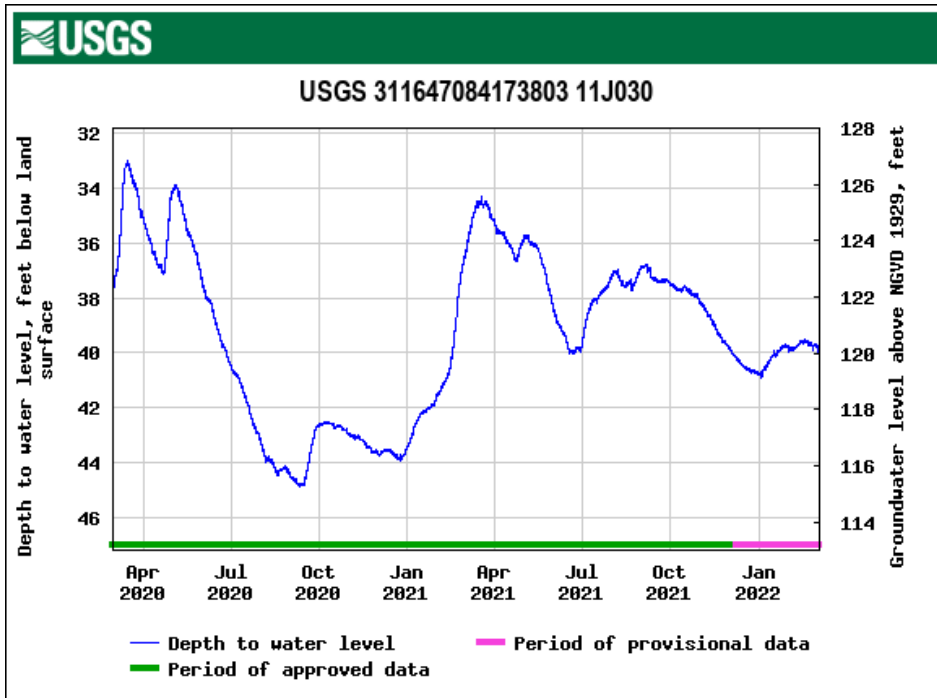
Drought Monitor map for Georgia as of March 1. As of that date, 39% of Georgia was in 'moderate drought' or 'abnormally dry'.

For more info:

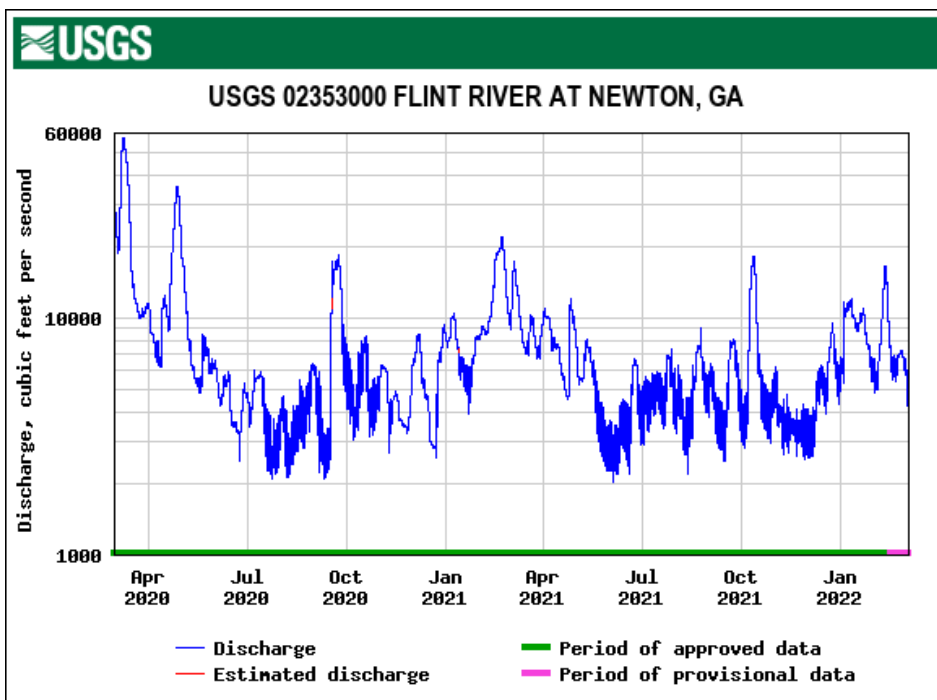
<https://droughtmonitor.unl.edu/CurrentMap/StateDroughtMonitor.aspx?GA>



Water Resources



Above - USGS data for the past 2 years for a groundwater monitoring well here at SIRP in Floridan aquifer. Below - stream gage on the Flint River at Newton for past 2 years.



Events

Past events

February 1	Weed Mtg. (Mitchell Co. Ext) 12pm
February 8	FRSWCD meeting
February 16	Peanut Prod. Mtg. (Mitchell Co. Ext) 6pm
March 2	GA AgTech Summit (Tifton)
March 3	Cotton Prod. Mtg. (Mitchell Co. Ext) 12pm
March 8	Pecan Prod. Mtg. (Mitchell Co. Ext) 12pm
March 8	FRSWCD meeting

Upcoming events

March 29	<u>Precision Ag Technology Workshops</u> (Statesboro)
March 31	<u>Precision Ag Technology Workshops</u> (Albany)
April 12	Ext. Irrigation Training (SIRP)
April 14	Ext. Irrigation Training (Midville)
June 21-23	4H2O Camp



In The News

[2 Utilizing Precision Ag Technology Workshops, March 29, 31](#)

[Time for Planning and Decision Making on this Summer Crop Season](#)

[Waning La Nina Brings Challenges for Spring Planting](#)

[Corn Planting Reminders](#)

[Georgia Ag Experience STEM Challenge focuses on pollinators](#)

[Soybeans planted near pollinators prove larger](#)

[Sonny Perdue officially gets University System chancellor job](#)

[Georgia Cotton Producers to Vote on Continuation of Assessment for Market Order](#)

[Farmers Struggle to Keep Up With the Rising Costs of Fertilizer](#)

[Supply Chain Crunches Are Affecting Every Corner of Agriculture](#)

[Cotton farmers alter insect management when the system changes](#)

[Canada's Nutrien eyes prolonged global fertilizer disruption from invasion of Ukraine](#)

[How Modern Agriculture Technology is Changing in 2022](#)

[Pivoting to automation](#)

[Peanut's water footprint shrinks](#)

[CAES generates record-setting \\$686.3 million annual economic impact in Georgia](#)



At the Park

Right & Below:

Burning the pine tree area
where the pines were cut
last year.



At the Park

Right: Planting new pine seedlings in area behind main office.

Below: Burndown & getting fields ready for corn planting.



At the Park

Right & Below:

B.J. & Kyle
measuring &
testing lateral
VRI zones.



Trivia

Which bone are babies born without?

Answer: Knee cap

How many hearts does an octopus have?

Answer: Three

How many eyes does a bee have?

Answer: Five

What was the name of the rock band formed by Jimmy Page?

Answer: Led Zeppelin

Who was the first woman to win a Nobel Prize (in 1903)?

Answer: Marie Curie

What type of music has been shown to help plants grow better and faster?

Answer: Classical

What celebrity has had their dog cloned– twice?

Answer: Barbara Streisand

Water has a pH level of around?

Answer: 7

What's the most expensive home in the world?

Answer: Buckingham Palace

What's the hardest rock?

Answer: A diamond

The Statue of Liberty was given to the US by which country?

Answer: France

Where is the Sea of Tranquility located?

Answer: The moon

What country has the world's most ancient forest?

Answer: Australia



Fun Puns...

What happened to the guy who sued over his missing luggage?
He lost his case.

Trying to get online at my mother-in-law's, I scrolled through various Internet access names. One neighbor's Wi-Fi really stood out:
"You Kids Get Off My LAN!"

What's the difference between a poorly dressed man on a unicycle and a well-dressed man on a bicycle? Attire.

What lies at the bottom of the ocean and twitches? A nervous wreck.

How much money does a pirate pay for corn? A buccaneer.

Don't interrupt someone working intently on a puzzle. Chances are, you'll hear some crosswords.

Which country's capital has the fastest-growing population?
Ireland. Every day it's Dublin.

Did you hear about the auto body shop that just opened?
It comes highly wreck-a-mended.

What do you call a bear with no teeth? Gummybear

I lost my job at the bank on my very first day. A woman asked me to check her balance, so I pushed her over.

A lizard walks into a bar pushing a baby in a stroller. "What's your kid's name?" asks the bartender. "Tiny," says the lizard. "Because he's my newt."

What do you call a laughing motorcycle? A Yamahahaha.

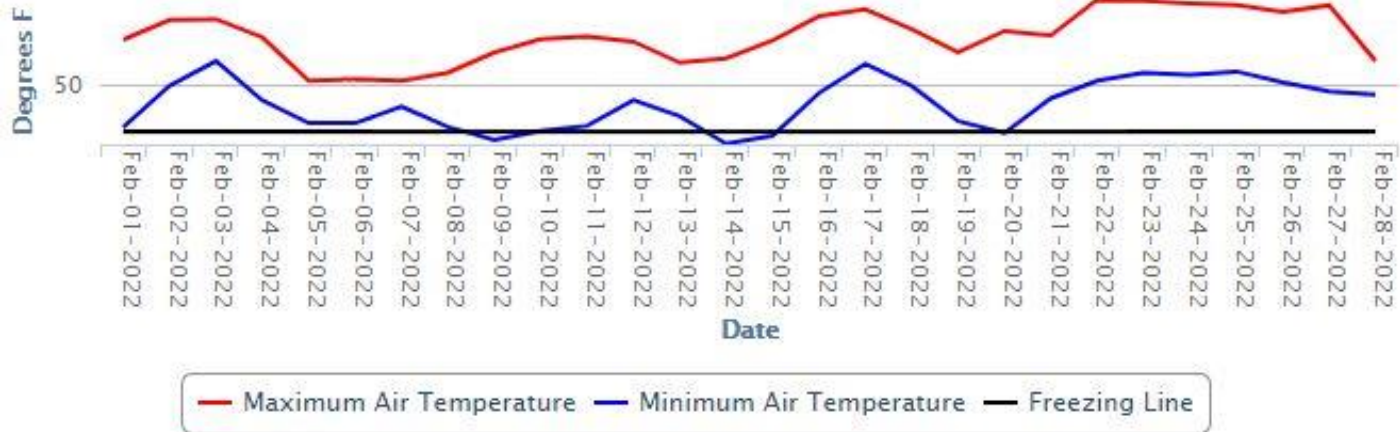
A friend of mine tried to annoy me with bird puns, but I soon realized that toucan play at that game.

Did you hear about the guy who got hit in the head with a can of soda? He was lucky it was a soft drink.

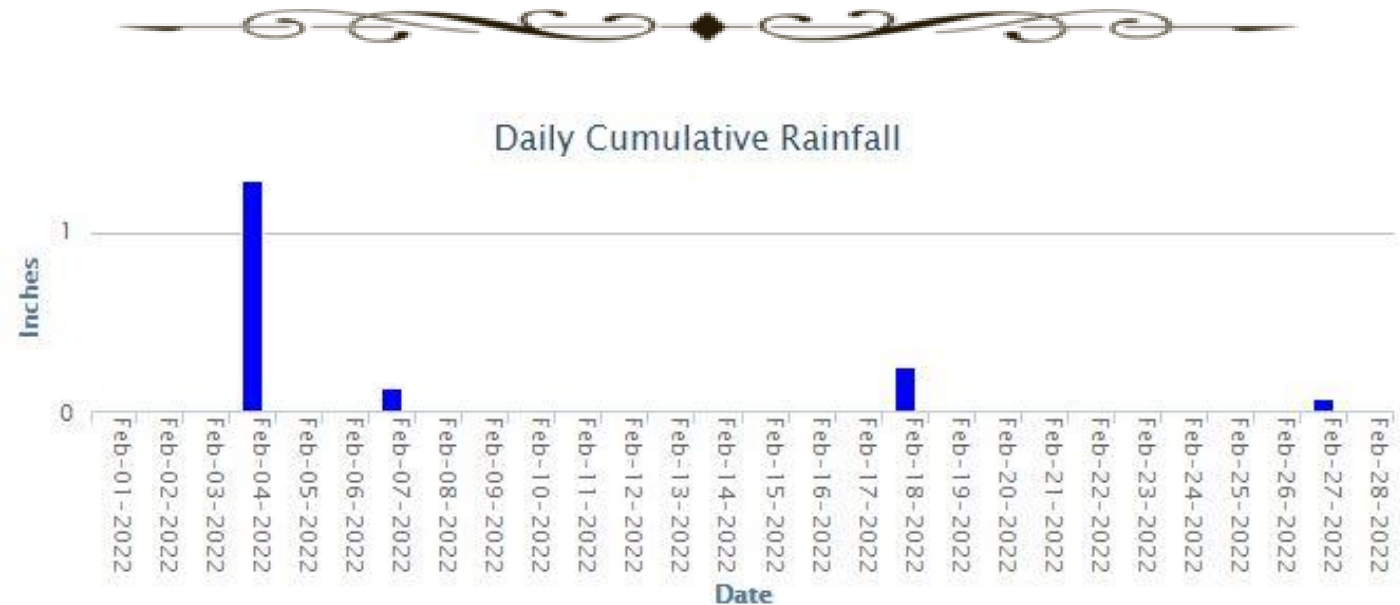


SIRP Weather

Maximum Temperature, Minimum Temperature



Daily Cumulative Rainfall



For February, SIRP had 1.79 inches of rainfall, compared to 5.05 inches in January, 3.38 inches in December and 0.07 inches in November.

To explore weather information, visit www.georgiaweather.net.



Contact Information



C.M. Stripling Irrigation Research Park

College of Agricultural & Environmental Sciences

UNIVERSITY OF GEORGIA

8207 Highway 37 West
Camilla, GA 31730
(229) 522-3623

striplingpark.caes.uga.edu

Calvin Perry (Superintendent): perrycd@uga.edu
Candace Gray (Admin. Associate): sirp@uga.edu

Trivia / Fun Fact:

What planets literally rain diamonds?

Answer: Saturn and Jupiter

Commit to Groundbreaking Research

Ag research keeps Georgia agriculture on the leading edge of the industry. Consider giving to the C.M. Stripling Irrigation Research Park today.

[Click here to Donate Now.](#)

